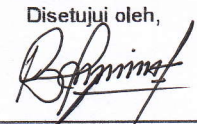
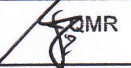
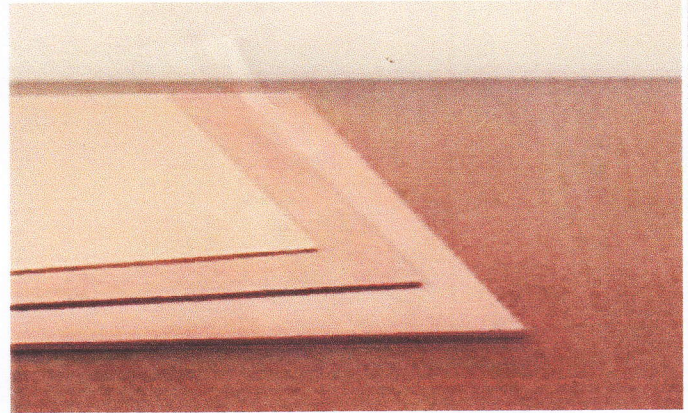
 HDF HMR PLUS IQID06001-006 ISO 9001:2015	JQA No. PAR-01-TQA-004	Disetujui oleh, 	Halaman 1 dari 2
			Tgl. Efektif : 10 September 2020	
CARB : TPC6/CARB-ATCM / M005 - MDF002		EPA : TPC6/EPA-TSCA / M005 - MDF002		

APPLICATIONS

HDF HMR Plus is a product with more resistance to thickness expansion. This product is an environmentally friendly board and is very suitable for **doors, kitchen cabinet, furniture and indoor application.**

PERFORMANCE

- ❖ Recommend for doors, kitchen cabinet, furniture and indoor applications.
- ❖ Recommend for use in areas subject to high humidity





ISO 9001:2015

HDF HMR PLUS

JQA
IQID06001-006

CARB :
TPC6/CARB-ATCM / M005 - MDF002

EPA :
TPC6/EPA-TSCA / M005 - MDF002

No. **P A R - 0 1 - T Q A - 0 0 4**

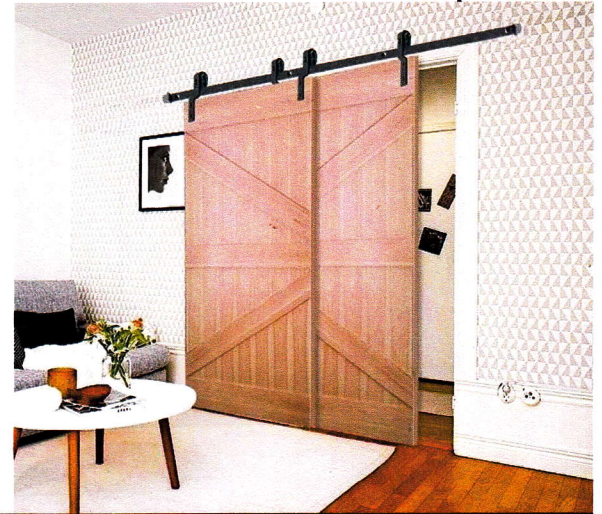
Tgl. Efektif : Disetujui oleh,
[Signature]

Halaman
2 dari 2

10 September 2020

GMR
[Signature]

Revisi : 0



HDF HMR PLUS

Properties	EN Method	Unit	Thickness (mm)	
			3.0 < t ≤ 4.0	4.0 < t ≤ 6.0
Density	EN 323	Kg/m ³	≥ 880	≥ 870
Thickness Tolerance	EN 324 - 1	Mm	± 0.15	
Moisture Content	EN 322	%	8 ± 3	
Modulus of Rupture	EN 310	N/mm ²	≥ 45	
Modulus of Elasticity	EN 310	N/mm ²	≥ 4500	
Internal Bonding	EN 319	N/mm ²	≥ 1.2	
**Thickness Swelling (20°C ,24 hrs)	EN 317	%	≤ 12	≤ 10
V 313 Swelling After Cyclic Test	EN 317	%	≤ 30	≤ 25
	EN 321			
Tensile Strength After Cyclic Test	EN 319	N/mm ²	≥ 0.35	≥ 0.30
	EN 321			
Boiling Test (EN 1087 -1)				
Internal Bonding	EN 319	N/mm ²	≥ 0.35	≥ 0.30
Thickness Swelling After Boiling Test	EN 317	%	≤ 25	≤ 30
Formaldehyde Content				
E0	BS EN 150 12460	mg/100g	≤ 5	
E1			≤ 8	
E2			8 < FC < 30	
Formaldehyde Emission				
CARB P2 & EPA TSCA Title VI	ASTM D 6007 : 2014	Ppm	≤ 0.13 (for thickness ≤ 8.0 mm)	
			≤ 0.11 (for thickness > 8.0 mm)	
Dimensional Movement				
Length/Width	EN 318	Mm	± 1.5	