




**PARAMETER INSPEKSI  
MELAMINE FACED MDF  
Products Standard**

No. P A R - 0 1 - T Q A - 0 0 4

Tgl. Efektif :  
05 Januari 2022

Disetujui oleh,

  
QMR

Halaman

1 dari 2

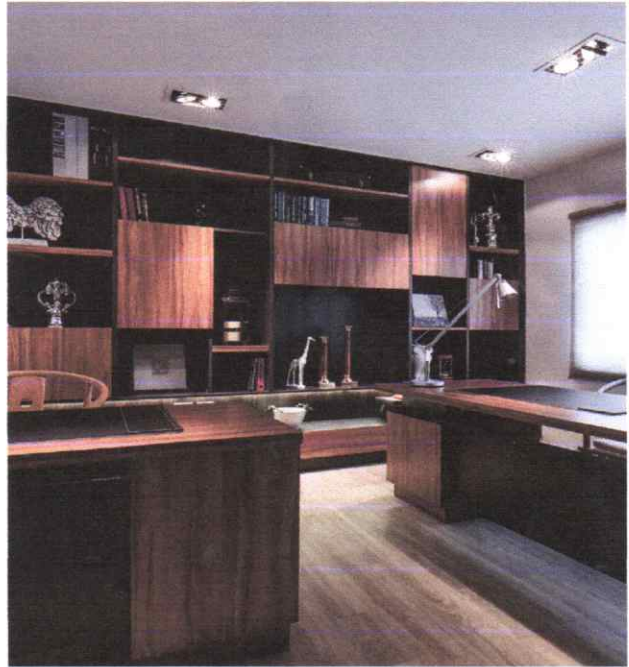
Revisi : 0

## APPLICATIONS

Formed by covering an MDF core with a decorative resin-impregnated paper, our melamine-faced MDF is suitable for **use in high-quality furniture and interior design projects**

### SUITABLE FOR APPLICATIONS IN:

- ❖ Kitchen Set Furniture
- ❖ Office Set Furniture
- ❖ Home Set Furniture
- ❖ Toilet Cubicles





**PARAMETER INSPEKSI  
MELAMINE FACED MDF  
Products Standard**

No. P A R - 0 1 - T Q A - 0 0 4

Tgl. Efektif :  
05 Januari 2022

Disetujui oleh,

QMR

Halaman

1 dari 2

Revisi : 0

## PERFORMANCE

- ❖ Resistance to scratches and dry heat
- ❖ Good dimensional stability
- ❖ Hygienic and easy to clean
- ❖ Long life cycle

SURFACE CHARACTERISTICS	TEST METHODS	UNIT	VALUE	
Thickness Tolerance	EN 14323	mm	$\leq 15 \text{ mm } \pm 0,2 \text{ mm } ; > 15 \text{ mm } \pm 0,3 \text{ mm}$	
Dimension Tolerance	EN 14323	mm/m	$\pm 2$	
Surface Defects	Length	EN 14323	mm/m <sup>2</sup>	$\leq 20$
	Spots	EN 14323	mm <sup>2</sup> /m <sup>2</sup>	$\leq 2$
Gloss	N/A	N/A	$\geq 85$	
Resistance to Scratches	EN 14323	N	$\geq 1,5$	
Resistance to Stains	EN 14323	Level	$\geq 3$	
Resistance to Cracks	EN 14323	Level	$\geq 3$	
Resistance to Water Steam	EN 14323	Level	$\geq 4$	